



EAGLE

Concrete

ACID STAIN

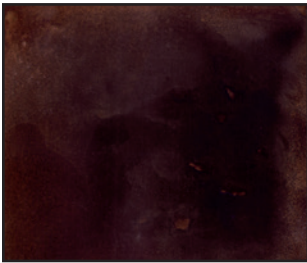
ACID STAINS create beautiful varied colors on cured concrete by reacting with the cement in the concrete surface. No two floors will look alike. The mottled and varied appearance of acid stained floors is common and also one of the big reasons the process has so much appeal. Sample stain for acceptability on actual floor before proceeding.



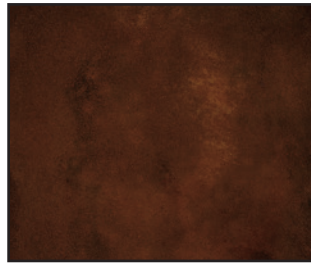
WHEAT



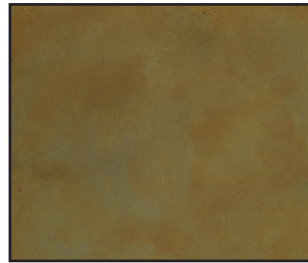
ONYX



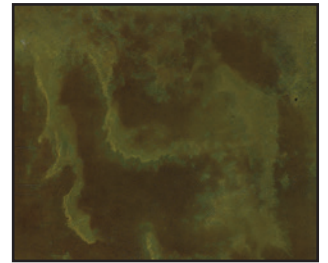
KODIAK



RUSTIC



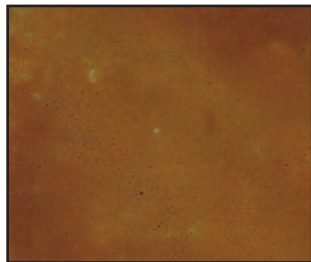
AMBER



PATINA*



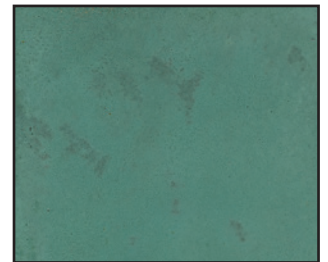
COCOA



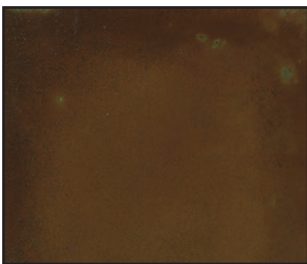
BRONZE



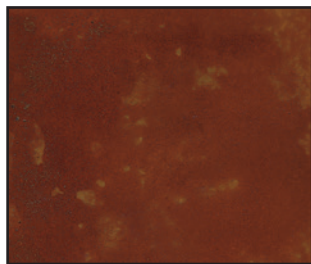
TAUPE



AQUAMARINE*



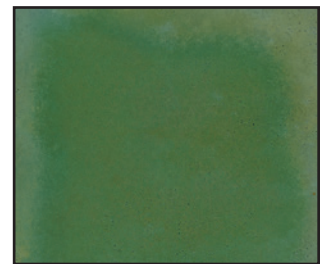
COPPER



GARNET



GRAPHITE



JADE*

* Interior use only

★ www.eaglesealer.com ★

ACID STAIN

TOOLS & MATERIALS REQUIRED

- ★ Acid resistant pump-up sprayer with conical tip
- ★ If masking: masking tape and wax-backed construction paper
- ★ Synthetic-bristle brush
- ★ Clean water for dilution and clean-up
- ★ **EAGLE ETCH & CLEAN**
- ★ **EAGLE CLEANER DEGREASER & NEUTRALIZER**
- ★ Sealer: **EAGLE ARMOR SEAL** or **EAGLE GLOSS COAT** where VOC rules allow. On interior concrete, finish with **EAGLE CONCRETE POLISH**.
- ★ Eye protection, rubber gloves and respirator

TEST BEFORE PROCEEDING

Test an inconspicuous area to be sure that acid stain reacts with concrete and color meets expectation before proceeding. Test for water seep by taping plastic on one square foot of floor. Remove plastic the following day. If floor is wet, you should not stain and seal floor.

SURFACE PREPARATION

The most important step to a project is preparation of the surface. The concrete should be at least four weeks old, free from all debris, and clean. **DO NOT USE MURIATIC ACID TO CLEAN** as you will destroy the important minerals necessary to produce the color range selected. Strip and remove all previous sealers, paints, adhesives, and coatings. Use **EAGLE ETCH & CLEAN** (diluted 4 to 1) to prepare concrete for acid staining. Rinse well. Concrete must be porous enough to accept water. Dense concrete surfaces may require mechanical preparation to accept acid stain. All repairs should be completed prior to starting the application of stain; coatings of any kind must be removed prior to staining. For oil spots use **EAGLE CLEANER DEGREASER & NEUTRALIZER** (diluted 4 to 1) and rinse well. Mask for over-spray with masking tape and water resistant construction paper. Duct tape over masking tape to prevent bleeding.

APPLICATION

EAGLE ACID RESISTANT SPRAYER should be used. Tape off walls or other areas to avoid overspray. Dampen concrete with water but do not puddle. Spray in an overlapping manner, maintaining a wet edge. Allow **ACID STAIN** to react for at least 6 hours. Clean residue and pour water on floor to approximate the final color. If darker color is desired, apply second coat. Concrete must be fully neutralized. Clean residue from floor with **EAGLE CLEANER DEGREASER & NEUTRALIZER** using an acid brush. Repeat. Rinse with clean water and mop up excess water. A Wet-Vac may be used. Rinse with clean water until rinse water is free of color and you can wipe floor without picking up color. Concrete must be completely free of residue. Expect to rinse with clean water several times. Once dry, test the readiness of the concrete by wiping floor with a white cloth. If it shows residue rinse and dry again. Repeat until no residue remains.

ACID STAIN HOW TO VIDEO please visit www.eaglesealer.com

COVERAGE RATE

Coverage is dependent on the age, porosity, weather, and composition of the concrete. A definite coverage rate cannot be determined because every scenario is different. However, as a general rule, 200-400 square feet per gallon should be average. Do not dilute.

SEALING

Allow concrete 24 hours to dry. Clear sealer is required to enhance the depth of color and should be tested before application. On exterior floors, seal with solvent-based **EAGLE GLOSS COAT** if local VOC rules allow. Alternatively, use water-based **EAGLE ARMOR SEAL**. For interior floors, after sealing, apply **EAGLE CONCRETE POLISH** for additional protection and enhancement. Use of **EAGLE CONCRETE POLISH** will diminish slipping and scuffing. **EAGLE CONCRETE POLISH** should be applied with a lamb's wool applicator or microfiber pad. As a maintenance routine, clean with water only and use **EAGLE CONCRETE POLISH** to prevent the need to reapply sealer.

TECHNICAL DATA

VOC: <0 g/L

Flash Point: N/A

DOT: UN3264, Corrosive Liquid, Acidic, Inorganic, N.O.S. (hydrochloric acid), 8, PGIII

HMIS			
Health	1	Flammability	0
Reactivity	1	Protection	G

DISCLAIMER: Since manufacturer has no control over handling, use or storage; no guarantee expressed or implied, is offered. Eagle IFP warrants the product to be free of defects and will replace or refund the purchase price of said products proven defective. Labor cost and/or other consequential damages are not covered by this warranty. Responsibility for claims of any kind is strictly limited to the purchase price of the product. The suitability of the product for any extended use shall be solely up to the user.

Made in USA

EAGLE IFP COMPANY